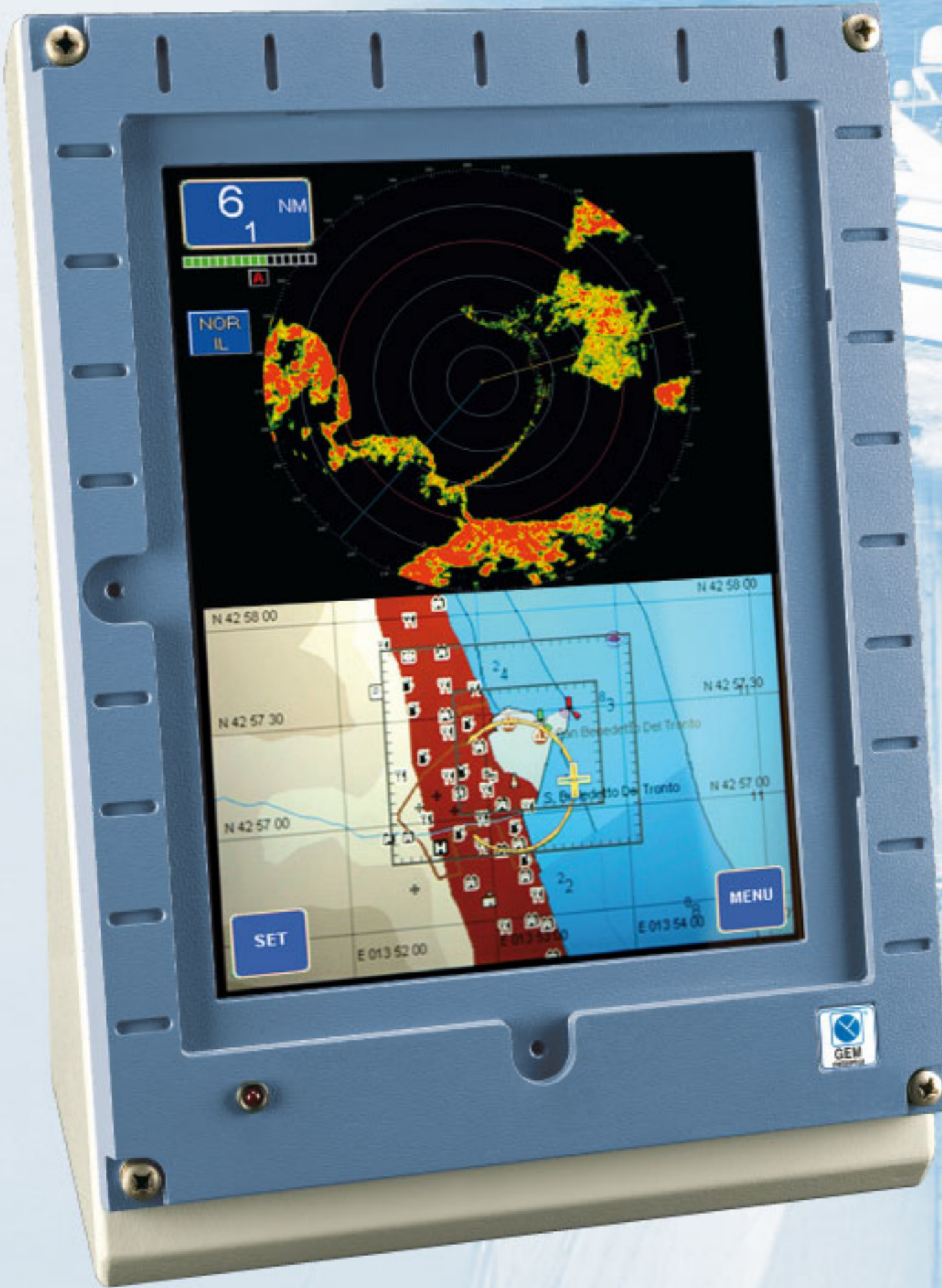


SUPERNET 1200 SERIES

Navigation suite including state-of-the-art equipment for professional application
*radar / plotter / videocamera**



3 years
Warranty**



Personal colors

Extended choice of colors for your pleasure.



Universal Mounting

Horizontal and vertical installation without need of mechanical modifications.



Ethernet LAN

Direct link between antenna and display and capability of interface with other onboard devices via ethernet LAN.

* Videocamera box optional

** with exclusion of the magnetron and front-end.

- ▶ Integrated radar and plotter
- ▶ Easy and straightforward operation of the functions available with waterproof keyboard
- ▶ Backlit display for best visibility in every light conditions
- ▶ Several installation options due to its reduced dimensions

DESIGNED FOR CARTOGRAPHY
C-MAP MAX



SUPERNE 1200 SERIES

DISPLAY AND KEYBOARD

Data Display Capabilities	Chartplotter, Radar, Echosounder
Display	12" LCD
Display colors	256
Display resolution	800 x 600 pixels, 16 levels
Display type	Super TFT, LCD
Interfaces	3 NMEA 0183, 1 auxiliary Ethernet LAN for connection GPS - AIS - ECHOSOUNDER - COMPASS - AUTOPILOT - SPEEDLOG
Keyboard	Remote keyboard with 1,5 mt cable
Mounting Methods	Table Top, console deeply integrated and roof mounting. Both vertical and horizontal presentation available, user selectable
MiniARPA	capability of manual/automatic acquisition and automatic tracking of 12 targets

ENVIRONMENTAL AND SUPPLY

Temperature (IEC 60945)	-15°C to 55°C (display) -25°C to 55°C (External Unit)
Enclosure	Waterproofing IPX5
Power Voltage	12 to 24 Vdc Radome - 24 Vdc Open antenna
Power consumption	< 100 W

INSTALLATION KIT

- Installation GEM cable 10 mt.
- Kit of ancillaries, installation and operator manual

OPTION

- Remote Keyboard with 5 mt cable
- Remote Keyboard with 10 mt cable
- Cartridge interface box

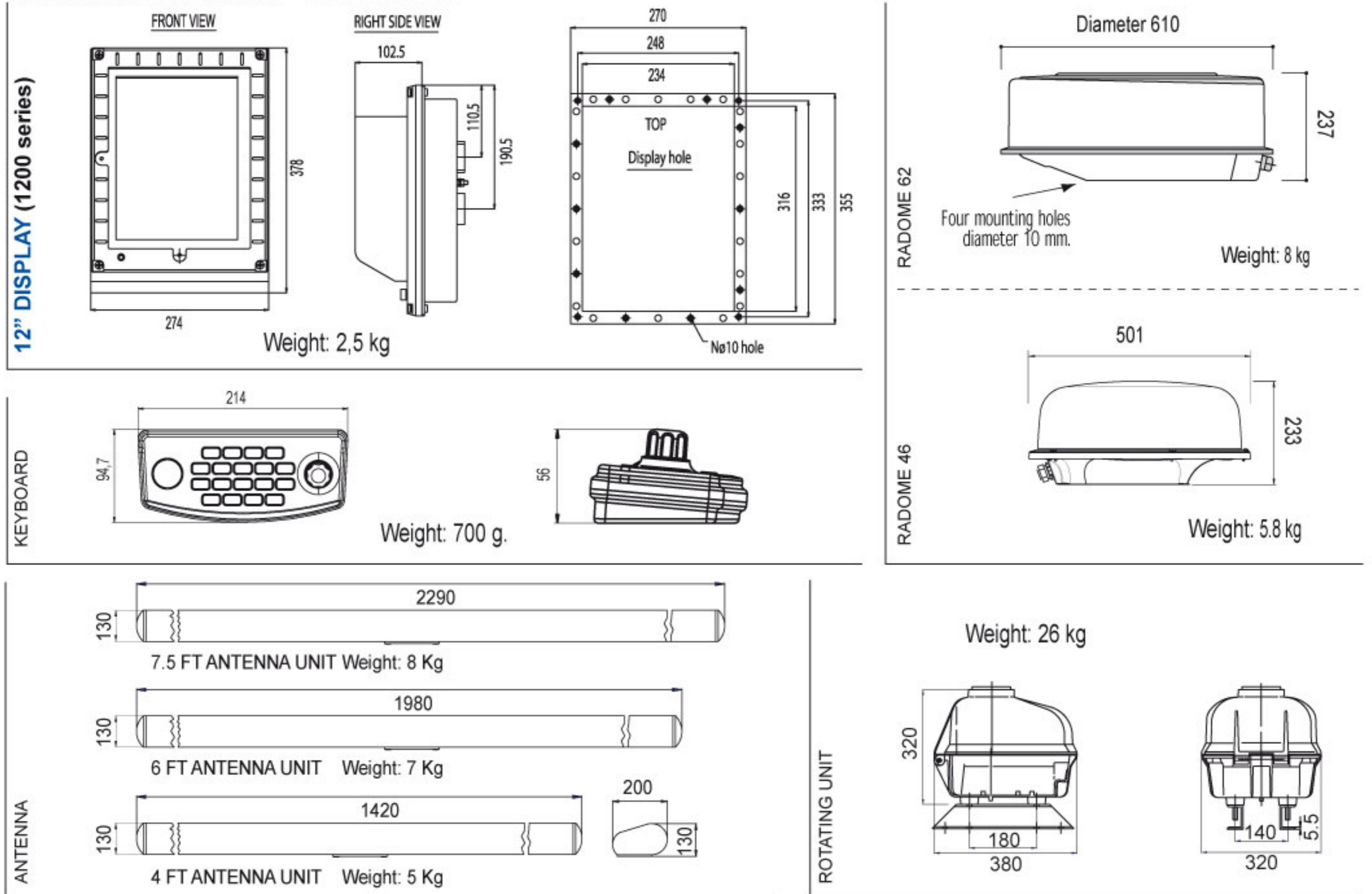
ANTENNA

	Radome 46	Radome 62	4 ft Array	6 ft Array	7.5 ft Array
Length	1.4 feet	1.8 feet	4 feet	6 feet	7.5 feet
Type	Microstrip Array		Slotted waveguide		
Frequency band	9410 ± 50 MHz.				
Polarization	Horizontal				
Horizontal beamwidth	5.2° ± 0.2°	3.8° ± 0.2°	1.8° ± 0.1°	1.2° ± 0.1°	1.05° ± 0.1°
Vertical beamwidth	22° ± 2°	22° ± 2°	22° ± 2°	22° ± 2°	22° ± 2°
Sidelobes within ± 10°	-19 dB	-19 dB	-26 dB	-26 dB	-26 dB
Sidelobes outside ± 10°	-21 dB	-21 dB	-30 dB	-30 dB	-30 dB
Gain	≥ 19 dB	≥ 21 dBi	≥ 27dBi	≥ 29 dBi	≥ 30 dBi

TRANSCIVER UNIT

	Radome		Open Array		
Peak power (nominal):	2 kW	4 kW	4 kW	12 kW	25 kW
Range scale:	36 nm	48 nm	64 nm	72 nm	96 nm
Radiation frequency:	9410 ± 30 MHz.				
Pulse Width:	50 nS	50 nS	50 nS	50 nS	80 nS
	80 nS	80 nS	200 nS	200 nS	200 nS
	300 nS	300 nS	400 nS	400 nS	400 nS
	800 nS	800 nS	800 nS	800 nS	800 nS
	(± 20nsec; for PW > 300nsec ± 10% tolerance)				
Pulse Repetition Frequency:	2600 Hz	2600 Hz	3200 Hz	3200 Hz	2000 Hz
	2100 Hz	2100 Hz	1600 Hz	1600 Hz	1000 Hz
	1200 Hz	1200 Hz	800 Hz	800 Hz	750 Hz
	600 Hz	600 Hz	500 Hz	500 Hz	500 Hz
	(with ± 5% tolerance – stagger function included)				
Transmitter type:	Magnetron				
Modulator:	fully solid state				
Receiver type:	logarithmic, fully solid state				
Dynamic range:	100 dB				
Intermediate Frequency (I.F.):	60 MHz ± 2 MHz				
I.F. bandwidth:	20 MHz with short and medium pulses 4 MHz with long and extralong pulses (with ± 10% tolerance)				
Noise Figure:	Nominal 3.5 dB				
Antenna rotation speed:	24/30 r.p.m. (radome) - 22 ± 2 r.p.m. (open array)				

OUTLINE DRAWING Dimensions in mm.



© June 2008, 23

This brochure should not be considered a contractual offer to sell. The specifications given herein may be changed by the manufacturer, GEM elettronica S.r.l., without notice.



Via Amerigo Vespucci, 9 - P.O. BOX 280
63074 San Benedetto del Tronto (AP) - I T A L Y
Tel. +39 0735 - 59051 - Telefax +39 0735 - 590540
marketing@gemrad.com; www.gemrad.com

