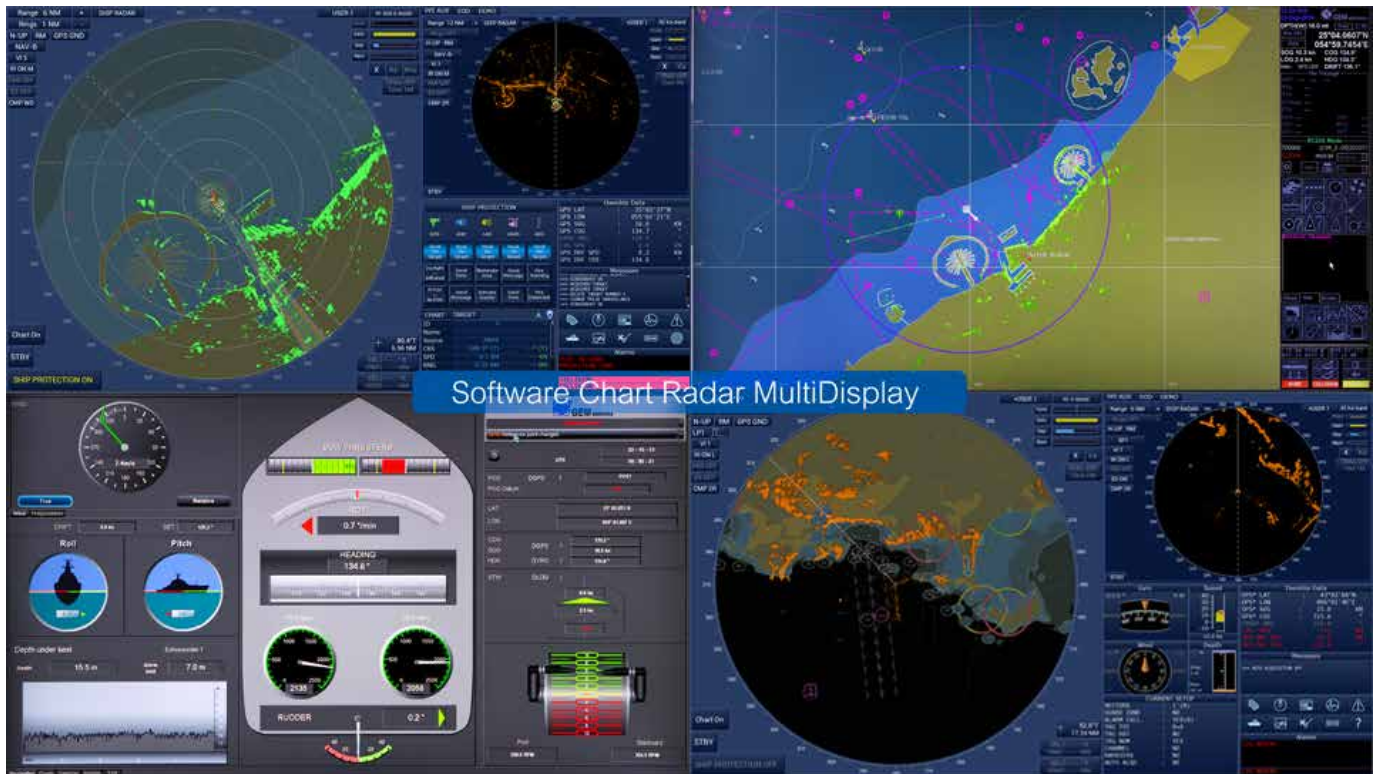


# Software Chart Radar MultiDisplay



Software Chart Radar MultiDisplay embodies tactical functionality as well as Video Processing System (VPS) mode that eases the operator's ability to differentiate between clutter and targets. It also has a twin PPI option that provides the operator with two independently configurable PPIs.



## SHIP PROTECTION in Option Mode



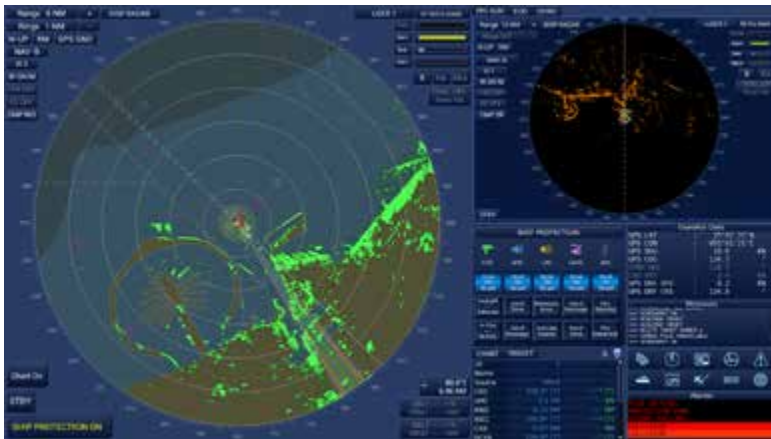
Ship Protection System integrates the vessels existing navigation systems such as AIS and radar with a suite of surveillance cameras and non lethal weapons.

In its basic configuration SPS offers the crew early detection and identification of approaching contacts, intuitive classification and alarm zone monitoring, as well as monitoring of own and friendly units such as support vessels or tender boats.

- Perimeter protection, privacy protection and tender tracking solutions onboard megayachts
- Anti-piracy solutions required by cruise and cargo ships.

## MAIN FEATURES

- Providing a platform for radar, chart radar, and Ship Protection display options.
- Ability to integrate with ECDIS and CONNING as option
- Easy to use and intuitive, with on screen prompts to assist the user.
- Open architecture enabling serial and digital interfaces.
- Twin PPI enables the user to build a complex picture on one PPI while leaving the other clear for collision avoidance

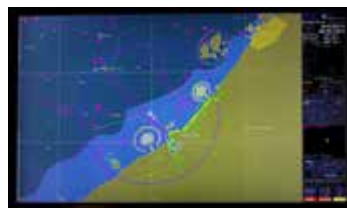


## USER EXPERIENCE

- Chart RADAR
- ECDIS applications (optional)
- CONNING applications (optional)
- Imaging camera
- Simulator mode (familiarisation mode available for tracking systems)
- Ship Protection



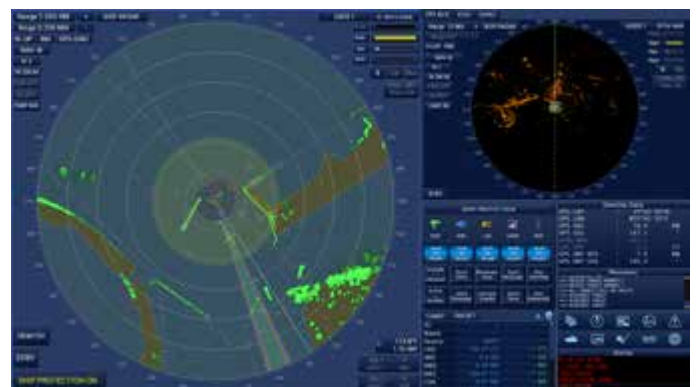
- EOD = Electro-optic device
- AHD = Acoustic Hailing Device
- LAD = Light Array Device
- UAHD= Underwater Acoustic Hailing Device
- ADS = Active Denial System



ECDIS applications (optional)



CONNING applications (optional)



## Surveillance & Security

## Guidance, Navigation & Positioning

## Military & Defence

## Marine Electronics

This brochure should not be considered a contractual offer to sell. The specifications given herein may be changed by the manufacturer, GEM elettronica S.r.l., without notice.



## FEATURES

- Ship Data
- AIS target information
- User defined profiles
- Operator track labelling
- Target association, vectors and past positions
- Dynamic clutter
- Depth display
- Single or dual plan position indicator (PPI) for enhanced situational awareness
- ARPA (Automatic Radar Plotting Aid)
  - 200 contact tracker
  - Automatic acquisition zones
  - Polyzone acquisition exclusion zones
- Integral simulator
- Radar sensor control
- Relative velocity calculations
- Serial and Ethernet interfaces
- Ground stabilised user mapping
- Man-overboard marker with drift compensation and elapsed time indicator
- Parallel index lines
- EBL/VRM for rapid range and bearing calculation
- Common reference point
- Two electronic bearing lines
- Two variable range markers
- ARPA/AIS target fusion