



GENERAL SITUATION WORKSTATION FOR NAVAL AND SUBMARINE

SMW-100

SMW-100 is a General situation workstation based on an IMO ECDIS certified software with the additional package managing Warship specific functionalities specially designed for naval and submarine applications.

The System architecture is constituted by:

- >> Ruggedized 55", 4K screen display
- >> Touchscreen
- >> Wireless keyboard and mouse
- >> Embedded ECDIS processor
- >> Interface unit for on board sensor integration
- >> Radar interface for video overlay

All system components are designed to fit into an 840 mm on-board passage.

The equipment will be mounted on a steel basement fixed to the vessel floor through shock absorbers. This will allow ruggedization and response to MIL standards suitable for submarine applications.



SMW-100

Operating Characteristics

Standard ECDIS Performances

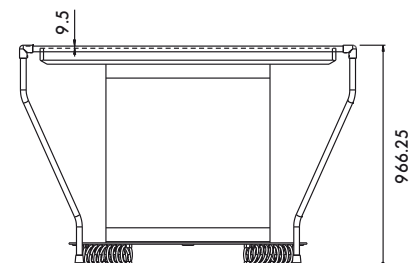
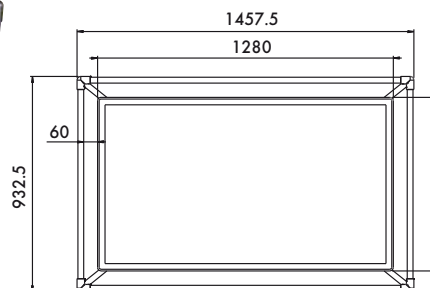
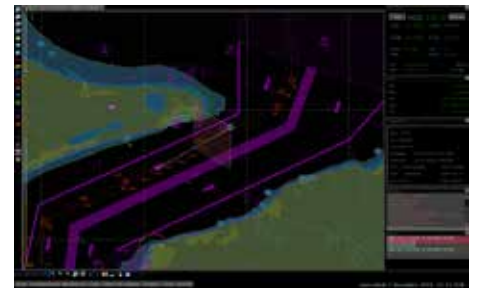
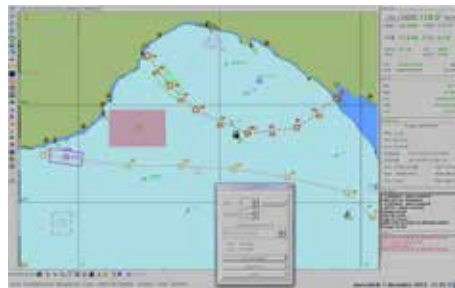
- Fully IMO compliant as per type approved ECDIS
- User both IHO S-57 ENC data
- Uses data conforming to NATO Digital Geographic Information Exchange (DIGEST) Standards including Vector Product Format (VPF) and Digital Nautical Chart (DNC)
- Uses Additional Navigation Information (ANI) provided by government hydrographic offices and military sources, including specific types of ANI data such as Raster Navigational Charts (RNC's), Admiralty Raster Chart Service (ARCS), NOAA's raster charts distributed and updates by Maptech, Inc.
- DNV type approved
- Complies also with the characteristics requested from norms STANAG 4564 and 7170.
- Automatically supports the supply of S-57 standard charts, encrypted with the PRIMAR scheme S-63

The specific functions included in the package are:

- Polar Navigation
- Moving Havens management
- Pool-of-Errors management
- Periscope information integration
- Waterspace management

Submarine Specific Functionality

- Submarine conning display
- Submarine sensor interface
 - Dived depth
 - Periscope
 - Sonar
- Waterspace management
 - Subnote ingestion
 - Moving havens
 - Stove pipes
 - Exercise areas
- Dived chart creation
 - Automatic contour generation
 - Dive contour characterization
- Submarine position fixing
 - Periscope
 - Contour line advancement
 - Line of sounding
- Target motion analysis
- 3D Nav
- 3D presentation using ENC data
- 3D presentation from Hi-Res bathymetric data
- Ownship shadow presentation



Weight: 120 Kg

Surveillance & Security

Guidance, Navigation & Positioning

Military & Defence

Marine Electronics

This brochure should not be considered a contractual offer to sell. The specifications given herein may be changed by the manufacturer, GEM elettronica S.r.l., without notice.

