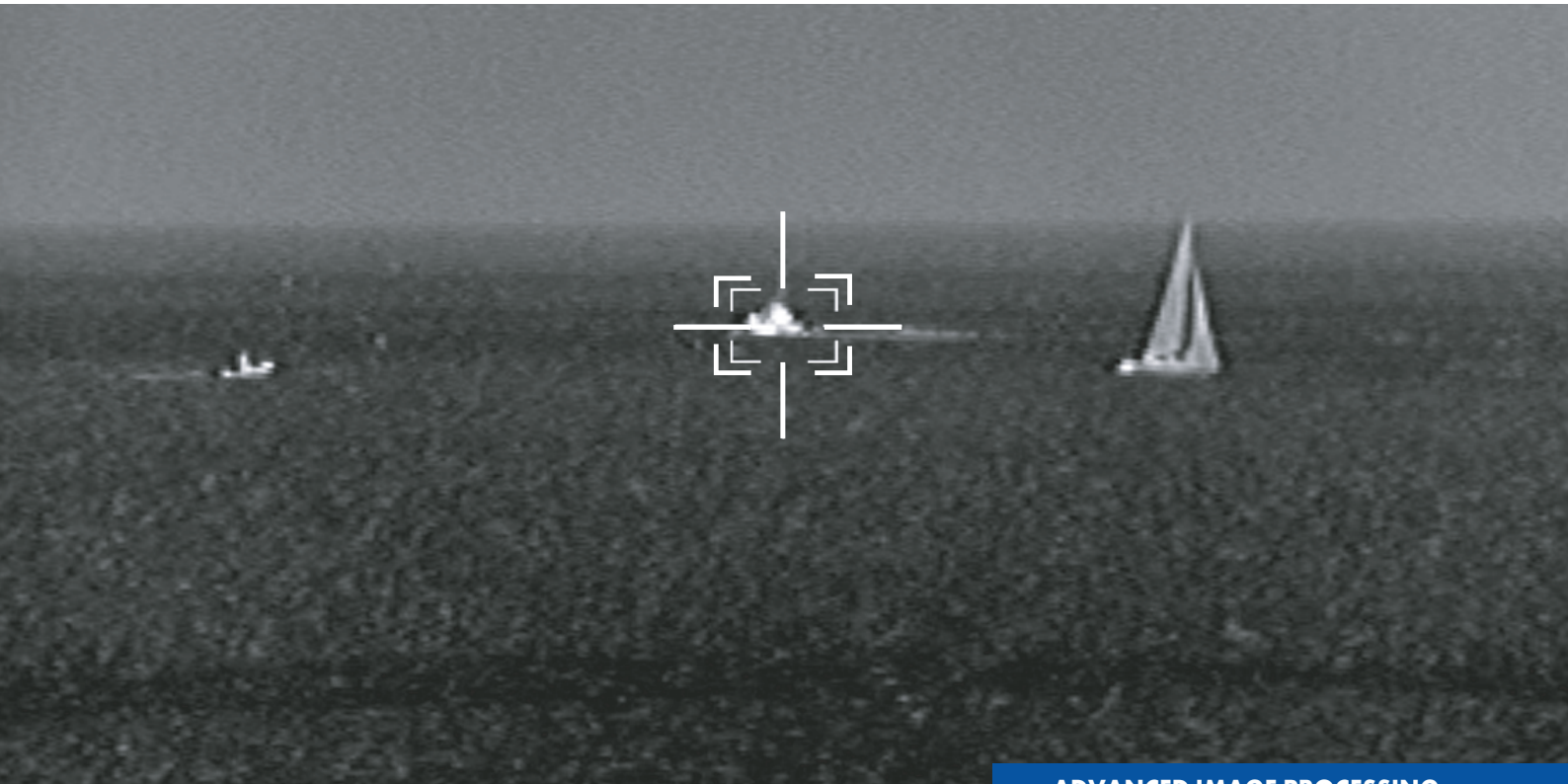
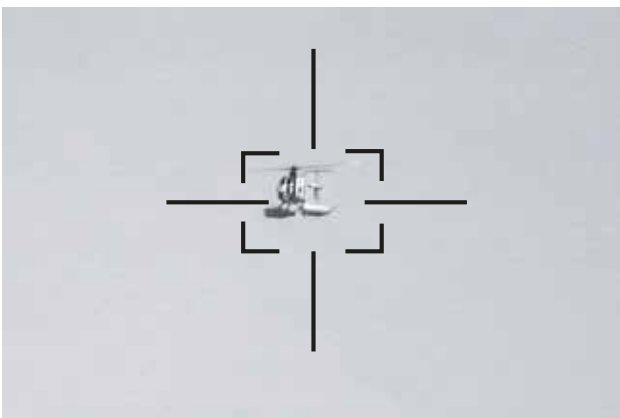


VIDEO TRACKER VTU-110



ADVANCED IMAGE PROCESSING

- Software based (upgradable)
- Multiple digital video inputs
- RS 232 and/or 422 interfaces
- Multiple algorithm capability
- Intelligent Breaklock and Re-acquisition algorithms
- Full HD/PAL/CCIR (60/50Hz) or NTSC/RS 170 operation
- Military regulation STD-810, STD-2036a, STD-1472, STD-461, STD-108E, HDBK-454 and civilian regulation RINA-IEC-68.2.1-2-3-27



Device for automatic tracking of the targets acquired to electro-optical surveillance system (EOSS)



VIDEO TRACKER VTU-110

Functionality/Modes

- > Detection
 - Single/multi target detection modes available
 - Detection Window
 - Position
 - Movable to any FoV position
 - Size
 - Variable from 4% to 90% of the FoV with manual or adaptive modes (dependent upon selected algorithm)
- > Target tracking single multi
 - Track algorithm selectable from:
 - Mosse
 - KCF
 - Medianflow
 - Track Window
 - Position
 - Automatically controlled to follow target to any FoV position
- > Boresight
 - Reference for the determination of the track errors. Movable for offset tracking.
- > Breaklock/Coast
 - Automatic two stage track-loss detection and re-acquisition
- > Hour meter for life time counting

Electrical Interface

- > Video IN/OUT
 - Full HD digital SDI (TV camera)
 - Analog PAL (IR camera)
- > Control Interfaces
 - Serial Interfaces RS232 or RS422
 - Ethernet
- > Power Requirements
 - Supply voltage 115/220 Vac
 - Power < 150 W

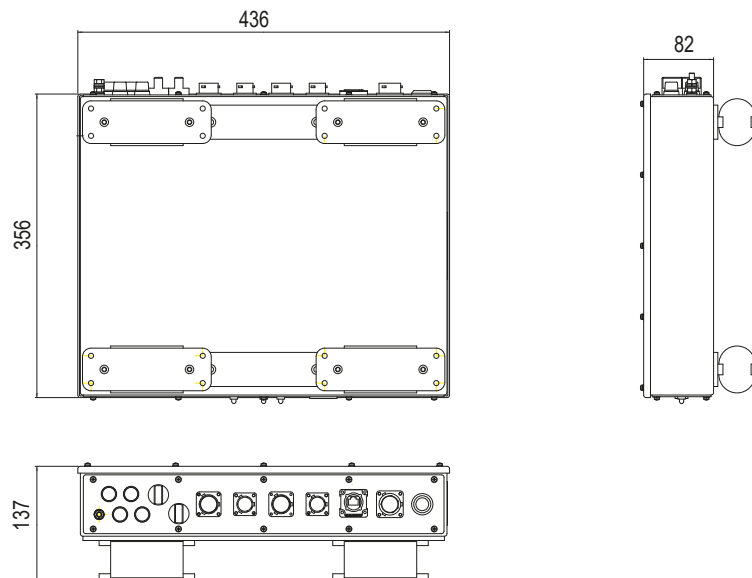
Mechanical

- > Size
 - 356 x 436 x 82 mm
- > Weight
 - 7.6 Kg
- > Connectors
 - MIL-MS-3470 series

Environmental (proven)

- > Temperature
 - Operating: 0°C to +50°C
 - Storage: -25°C to +70°C
- > RH
 - Dump heat +40° C 93% RH
- > EMI
 - MIL-STD-461E CE102
 - Conducted emission
 - 10 KHz : 10 MHz
 - MIL-STD-461E RE102
 - Radiated emission, electric field
 - 10 KHz : 18 GHz
- > Vibration
 - RINA: 1.0 mm from 2 to 13.2 Hz,
 - 0.7 g from 13.2 to 50 Hz
- > Shock
 - 30g 11 msec. Half sinusoidal
- > Waterproof
 - MIL-STD-108 "Dripproof 15°"

Outline drawing



dimensions in mm

