

SUPERNET

RadarBox DIGITAL LINE

GEM Digital Radar Line (DRL) provides impressive performances and a flawless radar video image thanks to its new architecture featuring a super compact DSP video processor board and enhanced networking capabilities.

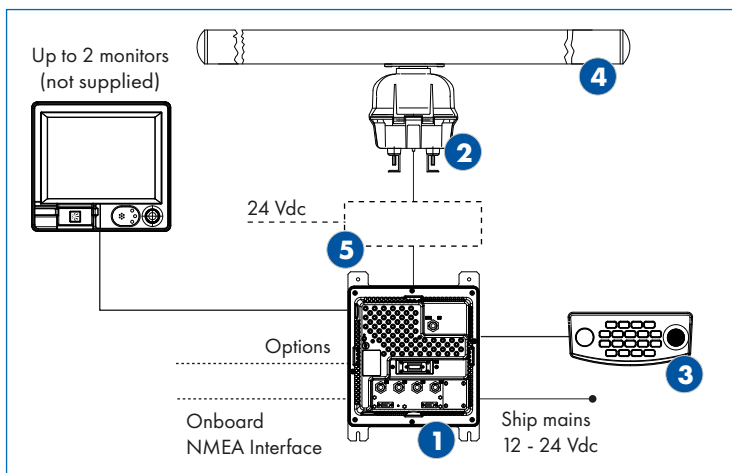
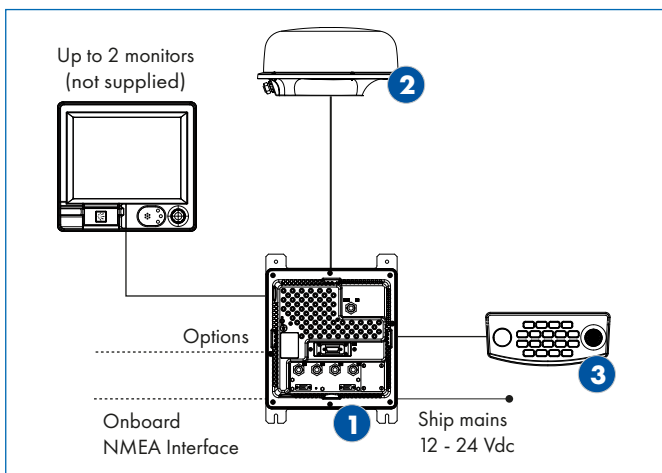


With DRL the following capabilities are ready to use:

- **Multi-display and multi-scanner configuration:** to dynamically configure any ship radar system with several displays and scanner units. Each scanner can be controlled in real time by the operator from any of the display unit (master configuration), while the other displays can independently show either the same (repeater mode) or any other different picture.
- **On-demand display assignment:** each display in the network can be independently and autonomously assigned by the operator to show the radar image, the video plotter or an overlay of combined radar-plotter image without interrupting navigation surveillance.
- **OEM Applications:** **GEM ELETTRONICA** software drivers allow scanner unit to be connected directly to standard PC using the RJ45 Ethernet port without any PC add-on hardware or external interfaces boxes. Drivers are available for Microsoft Windows XP and 7.



Order Code	GEM P/N	Display Unit	Display	Instr. Range	Display Resolution	Antenna Unit	Scanner Unit	Standard length of installation cable
440RD/P/RB	PF122308	not supplied		1/16 to 36nm	not supplied	SU82-01		10 mt
460RD/P/RB	PF122312			1/16 to 48nm		SU82-12		
44/P/RB	PF122352			1/16 to 64nm		AU11-04N	SU78-14E	
44/P/RB/B	PF122353					AU11-06N	SU78-14E/B	
46/P/RB	PF122362						SU78-14E	
124/P/RB	PF122372			1/16 to 72nm		AU11-04N	SU70-14E	
126/P/RB	PF122382					AU11-06N		
254/P/RB	PF122450			1/16 to 96nm		AU11-04NA	SU70-25E	
256/P/RB	PF122460					AU11-06N		
257/P/RB	PF122470					AU11-07N		



- 1 RADAR BOX
- 2 4 kW RADOME
- 3 KEYBOARD

- 1 RADAR BOX
- 2 4, 12 or 25 kW SCANNER UNIT
- 3 KEYBOARD
- 4 4, 6 or 7.5' ARRAY
- 5 ASU-41000 (case of 25 kW Scanner)

Options

HUB LINK SUPERNET 310

HUB LINK SUPERNET 620

Power supply cable

Connection cable between HUB (RJ45) and SUPERNET display, 1 mt / 5 mt / 20 mt / 30 mt

LAN connection Display-Display SUPERNET J6-J6, 5 mt / 10 mt / 20 mt / 30 mt

ETHERNET cable for connection between HUB and PC

Power supply cable DISPLAY and RADAR BOX complete with fuse

Fuse for new generation GEM cable 5 mt

Cable for interface with autopilot, fluxgate compass, GPS, AIS, external alarm, J3, J4, J5 connectors, 5 m / 10 m

Connection cable J5 with ECHO BOX, 5 mt / 10 mt

DATA CONCENTRATOR

Connections with EM cable for J3, J4 or J5 (same part number)

AC/DC CONVERTER

For radome type SP 100-12 Input 88-264 Vac 50 Hz, output 12 Vdc ± 2%

For open antenna type SP 320-24 Input 88-264 Vac 50 Hz, output 24 Vdc ± 2% 13 A

CONNECTION CABLES AND ACCESSORIES FOR SUPERNET AND RADAR BOX SYSTEMS

Connection cable between Radome and SUPERNET Display Unit, 15 mt length

Connection cable between Radome and HUB, 15 mt length

Connection cable between Scanner and SUPERNET Display Unit, 15 mt length

Connection cable between Radome antenna and HUB, 15 mt length

C-MAP External C-Card reader

Cartography	C MAP-MAX	LOCAL
		WIDE
		MEGA WIDE

SUPERNET

RADARBOX

Data Display Capabilities	Chartplotter, Radar
RadarBox	Links to different unit
Interfaces	3 NMEA 0183, 1 auxiliary Ethernet LAN
Keyboard	Remote keyboard with 1.5 mt cable
Mounting Methods	See Outline drawing
MiniARPA	capability of manual/automatic acquisition and automatic tracking of 30 targets
AIS	50 targets, AIS ATon targets, (sensor required)

ENVIRONMENTAL AND SUPPLY

Temperature (IEC 60945)	- 15°C to 55°C (display) - 25°C to 55°C (External Unit)
Enclosure	Waterproofing IPX5
Power Voltage	12 to 24 Vdc Radome - 24 Vdc Open antenna
Power consumption	< 70 W

INSTALLATION KIT

Installation GEM cable 10 mt.
Kit of ancillaries, installation and operator manual



Radar Box and Keyboard Unit

ANTENNA	Radome 46	Radome 62	4 ft Array	6 ft Array	7.5 ft Array
Length	1.4 feet	1.8 feet	4 feet	6 feet	7.5 feet
Type	Microstrip Array		Slotted waveguide		
Frequency band	9410 ± 50 MHz.				
Polarization	Horizontal				
Horizontal beamwidth	5.2° ± 0.2°	3.8° ± 0.2°	1.8° ± 0.1°	1.2° ± 0.1°	1.05° ± 0.1°
Vertical beamwidth	25° ± 2°	25° ± 2°	22° ± 2°	22° ± 2°	22° ± 2°
Sidelobes within ± 10°	-19 dB	-19 dB	-26 dB	-26 dB	-26 dB
Sidelobes outside ± 10°	-21 dB	-21 dB	-30 dB	-30 dB	-30 dB
Gain	≥ 19 dBi	≥ 21 dBi	≥ 27dBi	≥ 29 dBi	≥ 30 dBi

TRANSCIVER UNIT

	Radome		Scanner		
Peak power (nominal):	4 kW		12 kW	25 kW	
Range scale:	36 nm	48 nm	64 nm	72 nm	96 nm
Radiation frequency:	9410 ± 30 MHz.				
Pulse Width:	50 nS	50 nS	50 nS	50 nS	80 nS
	80 nS	80 nS	200 nS	200 nS	200 nS
	300 nS	300 nS	400 nS	400 nS	400 nS
	800 nS	800 nS	800 nS	800 nS	800 nS
	(± 20nsec; for PW > 300nsec ± 10% tolerance)				
Pulse Repetition Frequency:	2600 Hz	2600 Hz	3200 Hz	3200 Hz	2000 Hz
	2100 Hz	2100 Hz	1600 Hz	1600 Hz	1000 Hz
	1200 Hz	1200 Hz	800 Hz	800 Hz	750 Hz
	600 Hz	600 Hz	500 Hz	500 Hz	500 Hz
	(with ± 5% tolerance – stagger function included)				
Transmitter type:	Magnetron				
Modulator:	fully solid state				
Receiver type:	logarithmic, fully solid state				
Dynamic range:	100 dB				
Intermediate Frequency (I.F.):	60 MHz ± 2 MHz				
I.F. bandwidth:	20 MHz with short and medium pulses 4 MHz with long and extralong pulses (with ± 10% tolerance)				
Minimum Detection Range	< 15 m from the antenna location				
Noise Figure:	Nominal 3.5 dB				
Antenna rotation speed:	Radome: 24 / 30 (> 1.5 nm) rpm - Open array: 22 ± 2 rpm - River: 36 rpm				



Radome: SU82-01



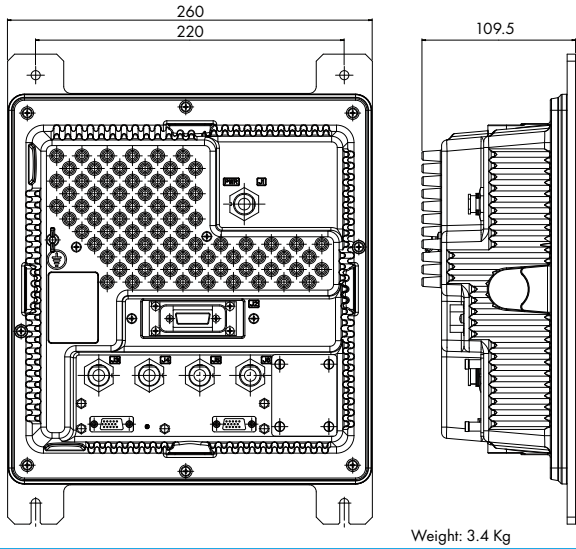
Radome: SU82-12



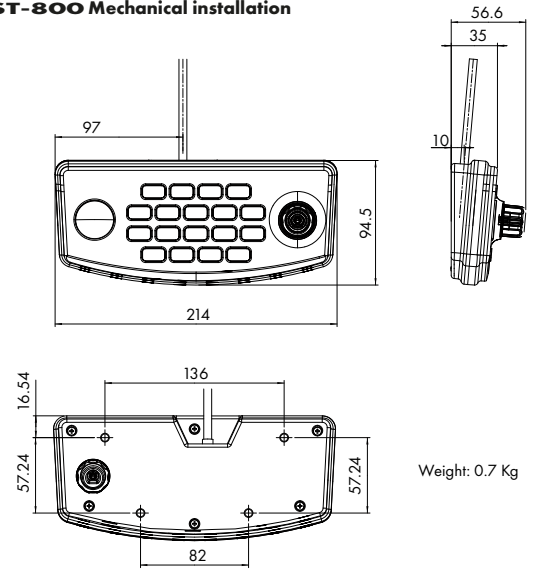
Open array and Scanner aspect



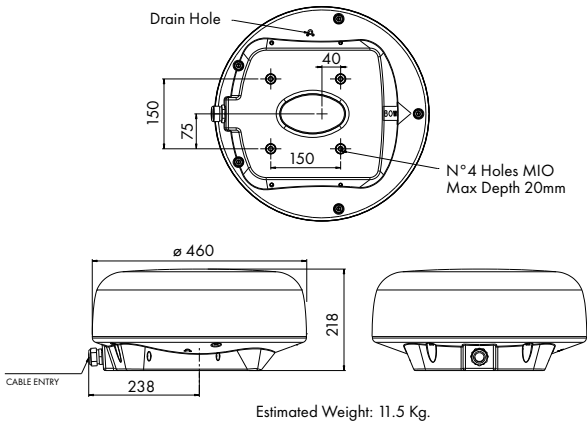
RBX-500 Vertical installation with bracket



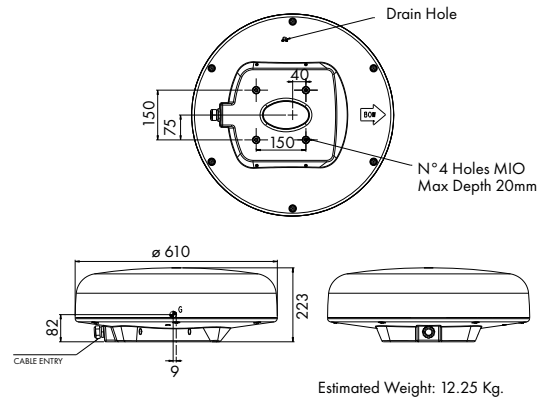
TST-800 Mechanical installation



SU82-01 Mechanical installation

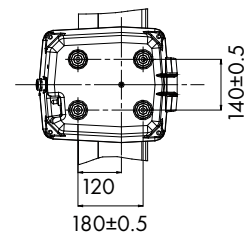
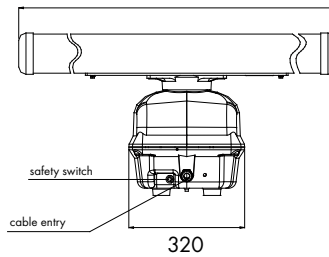
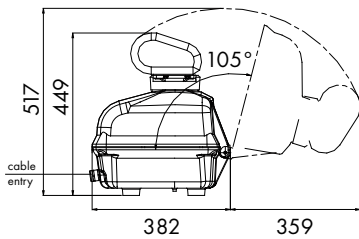


SU82-12 Mechanical installation



**AU11-04N/AU11-04NA
AU11-06N
AU11-07N**

4 feet (1400 mm)
6 feet (1940 mm)
7.5 feet (2210 mm)



Estimated Weight

4' ANTENNA UNIT	3.8 kg.
6' ANTENNA UNIT	5.8 kg.
7.5 ANTENNA UNIT	11 kg.
SCANNER UNIT	14.5 kg.

**SU78-14E
SU78-14E/B
SU70-14E
SU70-25E**

